

Xtreme Products Inc.

Kit No. XTH420 420 Rancher 07-up models

Read these instructions carefully. Xtreme recommends, a professional mechanic perform the installation. Care should be taken to follow all standard safety procedures.

A thorough inspection of the suspension should be made prior to performing the installation. Any worn, bent or broken parts should be replaced. After installation another inspection should be made, checking for loose components or missing hardware. Inspect, again after eight hours of operation.

To begin, check to make sure all components and necessary tools are on hand.

Components:

The kit consists of two bags containing Hardware and Brackets.

Bag #1 for the Front plus bracket # 4200-01

Bag #2 for the Rear plus bracket # 4200-02

Disassembly / Installation Procedure

1.)Begin by loosening the lug nuts on both front tires. Raise the unit, using a suitable lifting device or procedure, until the front tires are off the ground. If using a floor jack with stands, chock the rear wheels to prevent the unit from rolling. If using jack stands, make sure the stands are placed under the frame and not the body. Make sure the unit is **stable and secure**.

2.)Remove the tires / wheels.

NOTE: *Now is a good time to check the threads on the lug studs. Check for rust, pulled threads or other deterioration that could cause a stud/thread failure.*

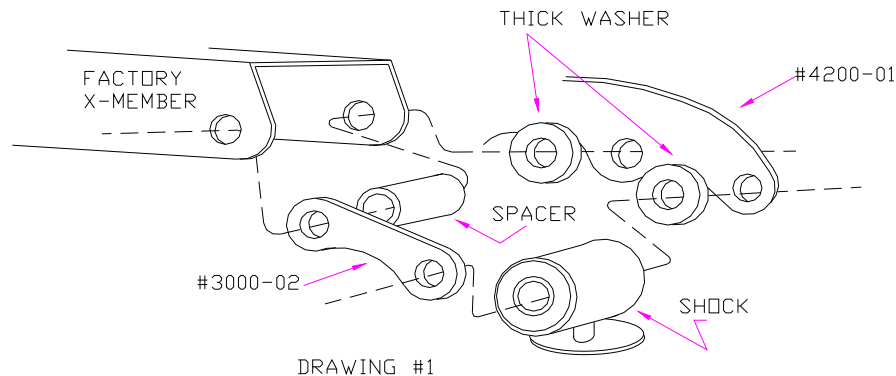
READ THIS PRIOR TO BEGINNING INSTALLATION

NOTE: The center of *the #4200-01 bracket is offset to clear interference* on the front x-member. **BE SURE** to install the bracket correctly. Look at the bracket and make sure the inner slotted hole goes on the Passenger or Right side. Make sure you have it installed correctly before tightening any bolts.

3.)Remove contents from Bag #1. Start with the front, on the drivers (left as you sit on the bike) side, remove the wheel and the top bolt holding the shock to the frame, loosen bottom bolt allowing you to pull the shock out and away from the upper mount. Repeat these steps on other side. Next slide the #4200-01 along rear outside of factory channel. Using a 10x60mm bolt, going from rear to front, insert it through the Xtreme bracket placing one of the thick washers on the bolt between our bracket and factory channel. Place spacer and link on the inside of factory channel inserting the bolt through stock shock location. Do not tighten this bolt; just start the nut on the bolt. Repeat for other side.

4.) Since you should be on the Right Hand side at this point, we will start there. Next place shock (make sure adjusters are at lowest setting) in the new position. Take a 10x60mm bolt and inserting it from rear to front through the long x-member, a thick washer, shock, the small link then start a nut on the bolt. You may have to use a pry bar to compress the spring enough to place bolt through brackets. Since these bikes are new the coils may not have settled enough for you to install the bolt without compressing the coil a small amount. Repeat for other side. Now, after both sides have been installed, tighten all bolts and readjust shocks.

Drawing #1 reflects above instructions.



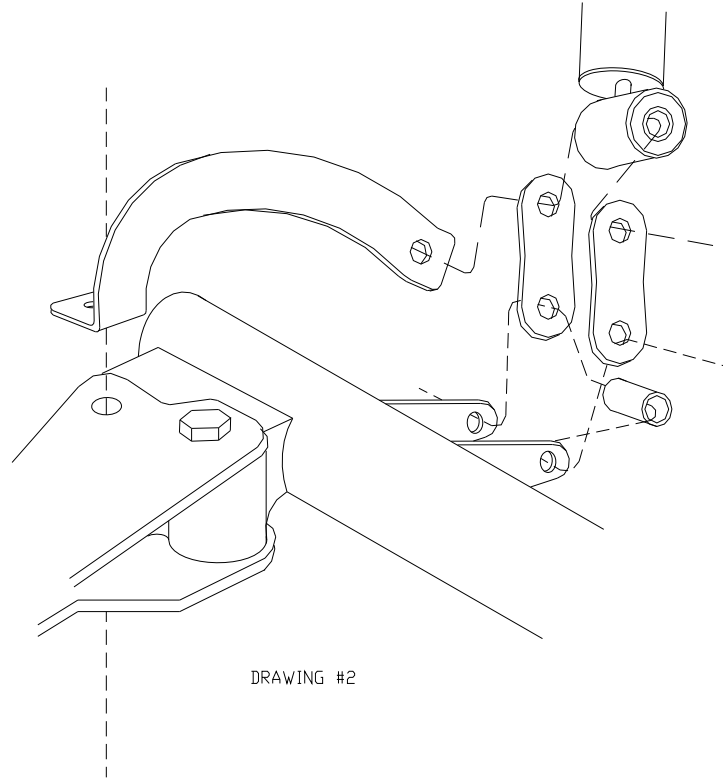
Rear Assembly

5.) Begin by raising the unit, using a suitable lifting device or procedure, until the rear of the bike is off the ground. If using a floor jack with stands, chock the front wheels to prevent the unit from rolling. If using jack stands, make sure the stands are placed under the frame and not the body. Make sure it is **stable and secure**, place jack under rear axle, you will need to be able to raise and lower the rear axle without the rest of the bike moving.

NOTE: Pay attention to thread pitch on bolts and nuts for the rear (shock bolts are coarse and rear hitch bolt is fine). If the nut does not start on the bolt double check to be sure you have the right thread pitch.

6.) Refer to drawing #2 for assembly of Bag #2. It is not necessary for the wheels to be removed for the rear brackets but you may find it easier with the wheels removed. Take the bottom shock bolt out and swing shock forward. Remove bolt on driver's side (left) of rear hitch mount. Looking at stock shock location from rear right to left using a 10x60mm bolt, place shock ext. and spacer inside the factory mount, insert bolt (right to left) through stock location, shock ext, spacer, and other side of stock location. Place the other shock extension on the bolt and hand tighten the nut. Next adjust rear axle height to line up with shock extensions, place bolt (again from right to left) through shock ext, shock, shock ext, the flat end of #4200-02 install a nut and hand tighten. Swing #4200-02 over the axle to sit on top of rear hitch mount. Insert 10x70mm bolt through the bracket and hitch mount, install the fine thread flange nut on bottom and tighten all bolts.

Refer to Diagram #2



7.) A good “Anti-Seize” compound should be applied to the lug studs and the tire/wheel combination of choice installed. Remove all jacks, jack stands and other devices used to lift and hold the bike. Check all brackets and bolts to be sure everything is tight.

WARRANTY: This kit will be warranted against defects in workmanship and materials ONLY. Problems from misuse, improper installation or abuse are not covered in the warranty. This warranty is good for one year (12 months) form date of purchase. All warranty claims MUST be accompanied by the original receipt or suitable proof of purchase date.